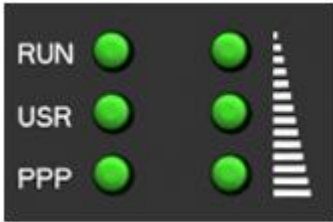


Robustel GoRugged R3000 Lite Quick Guide

Chapter 1. Interface Introduction

1.1 LED Indicators



After inserting the SIM card into the router and power on, the LED indicators' status should be as follow when work normally:

Name	Color	Status
RUN	Green	Blinking
PPP	Green	PPP connection is up: On PPP connection is down: Off
RSSI	Green	At least 2 bars

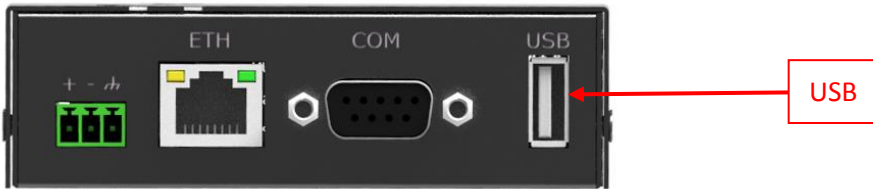
Note: Please refer to *Robustel GoRugged R3000 Lite User Guide* to get more details about the LED indicators.

1.2 PIN assignment

PIN	Power
10	Positive
11	Negative
12	GND

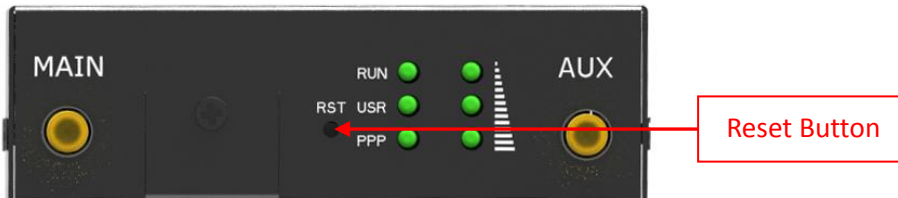
DB9 Female Connector				
PIN	Debug	RS232	RS485 (2-wire)	Direction
1			Data+ (A)	-
2		RXD		R3000 Lite → Device
3		TXD		Device → R3000 Lite
4	DRXS			Device → R3000 Lite
5	GND	GND		-
6			Data- (B)	-
7		RTS		Device → R3000 Lite
8		CTS		R3000 Lite → Device
9	DTXD			R3000 Lite → Device

1.3 USB interface



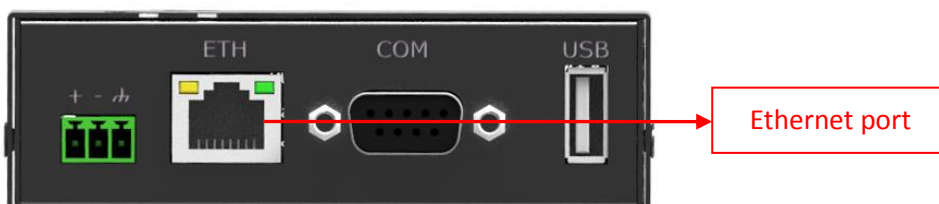
USB interface is used for batch firmware upgrade, cannot be used to send or receive data from slave devices which use the USB interface. Users can insert an USB storage device, such as U disk or hard disk, into the router's USB interface, if there is a configuration file or firmware of R3000 Lite inside the USB storage device, R3000 Lite will automatically update the configuration file or firmware.

1.4 Reset Button



Function	Operation
Reboot	Push the button for 5 seconds under working status.
Restore to factory default setting	Push the button for 60 seconds once you power on the router until all the three LEDs at the left side (RUN, PPP, USR) blink at the same time for 5 times.

1.5 Ethernet port

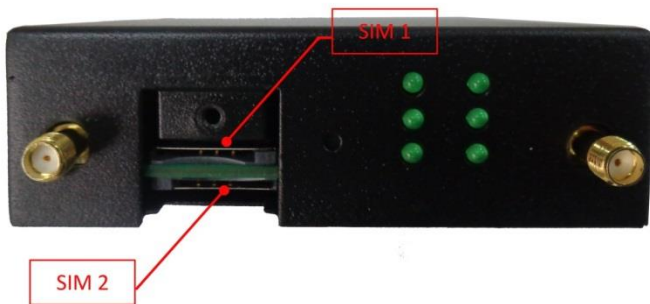


Indicator	Color	Status	Description
Speed Indicator	Green	Off	10 Mbps mode.
		On	100 Mbps mode.
Link Indicator	Yellow	Off	Connection is down.
		On	Connection is up.
		Blink	Data is being transmitted

Chapter 2. Hardware Installation

2.1 Insert SIM Card

SIM card is used for connecting to cellular network, you need buy SIM card from local operators.



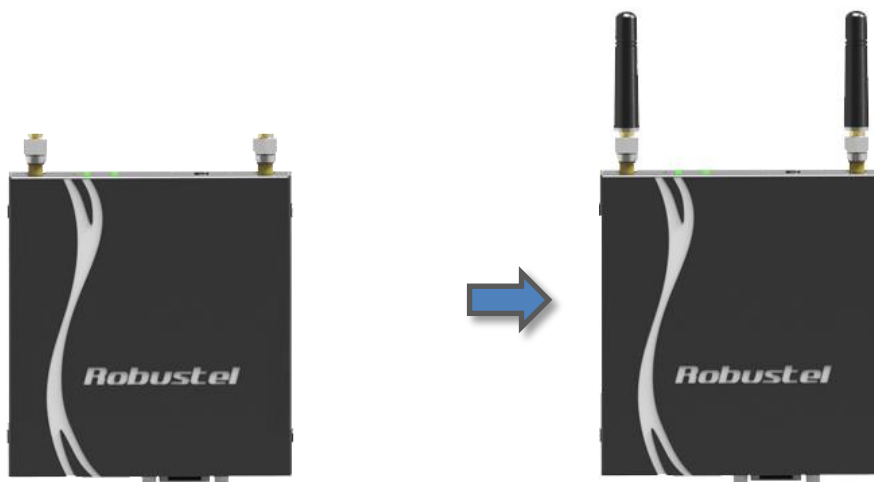
1. Unscrew the screw and remove the cover.
2. Insert SIM card into one of the SIM card slot
(When SIM card is correctly inserted you will hear “a cracking sound”).
3. Screw the cover.

Note:

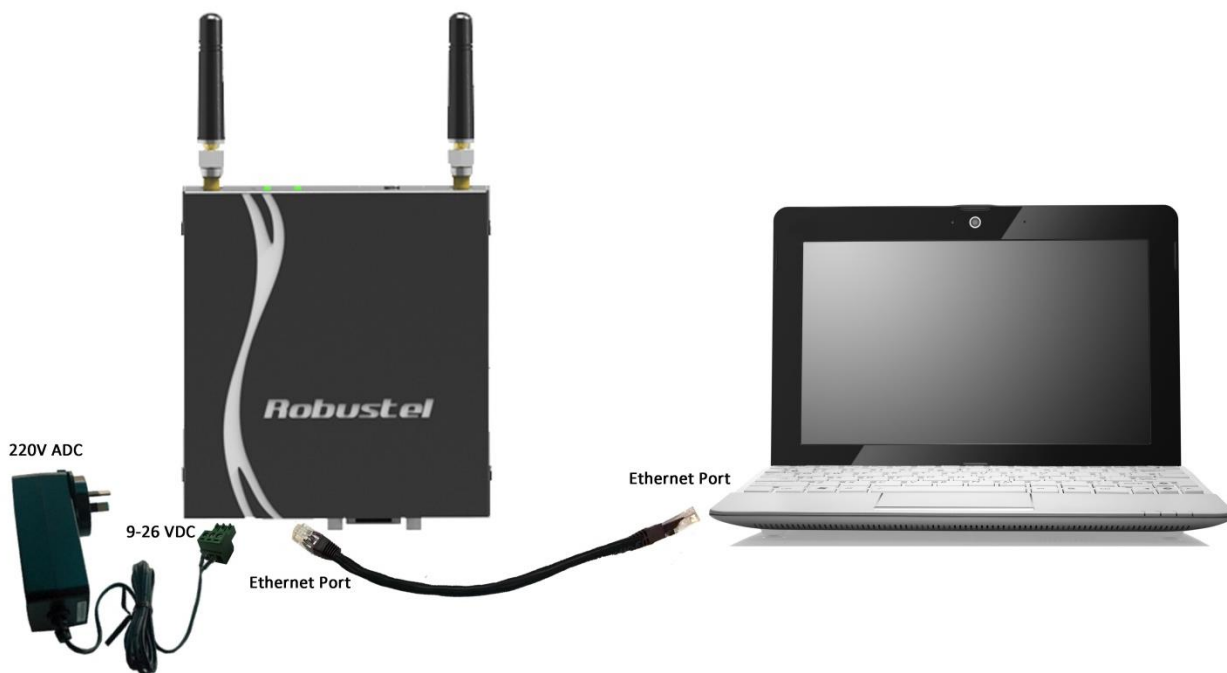
1. *Don't forget screw the cover for again-theft.*
2. *Don't touch the metal surface of the SIM card in case information in the card is lost or destroyed.*
3. *Don't bend or scratch your SIM card. Keep the card away from electricity and magnetism.*
4. *Make sure to disconnect the power source from your router before inserting and removing your SIM card.*

2.2 Connect Antenna

Connect router to an external antenna with SMA male connector. Make sure the antenna is for the correct frequency as your GSM/3G/4G operator with impedance of 50ohm, and also connector is screwed tightly.



2.3 Power On and Connect with PC



Chapter 3. Initial Configuration

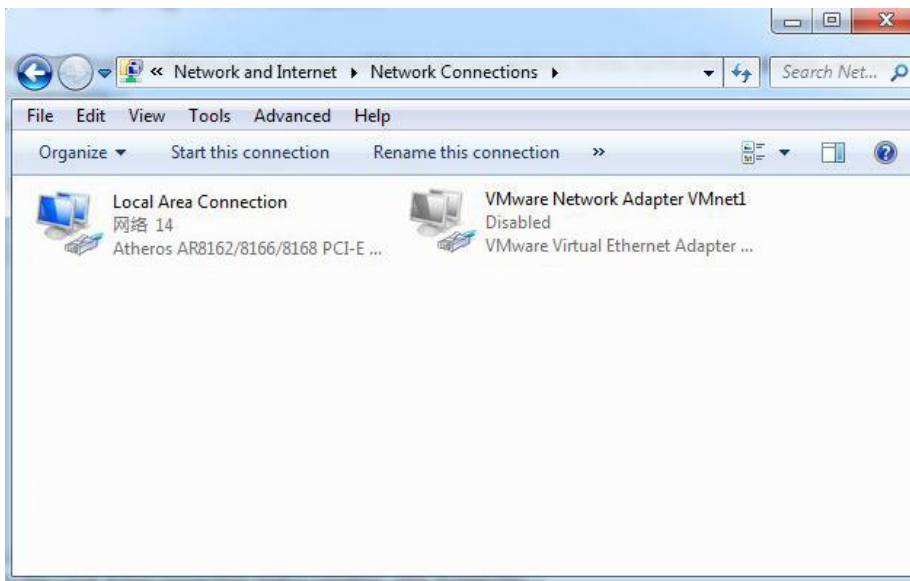
The router can be configured through your web browser. A web browser is included as a standard application in the following operating systems: Linux, Mac OS, Windows 98/NT/2000/XP/Me/Vista/7/8, etc. The product provides an easy and user-friendly interface for configuration.

There are various ways to connect the router, either through an external repeater/hub or connect directly to your PC. However, make sure that your PC has an Ethernet interface properly installed prior to connecting the router.

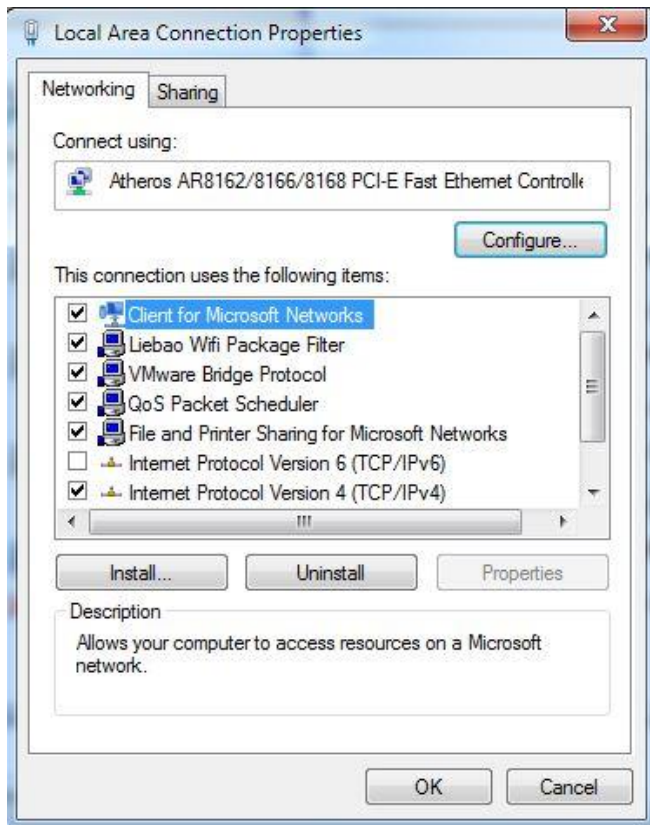
You must configure your PC to obtain an IP address through a DHCP server or a fixed IP address that must be in the same subnet as the router. The best and easiest way is to configure the PC to get an IP address automatically from the router using DHCP. If you encounter any problems accessing the router web interface it is advisable to uninstall your firewall program on your PC, as these tend to cause problems accessing the IP address of the router.

3.1 Configuring PC in Windows

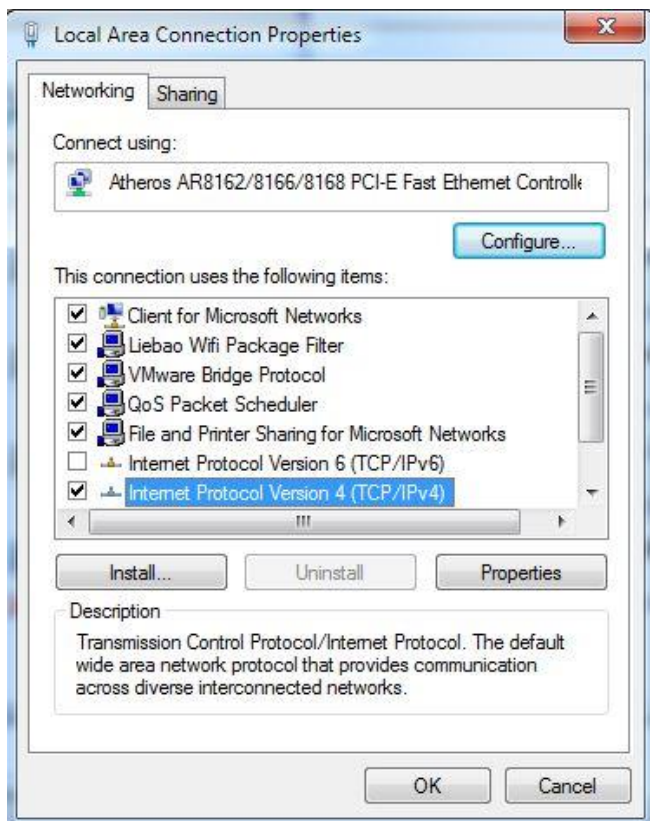
1. Go to **Control Panel\Network and Internet\Network Connections**. In the Control Panel, double-click Network Connections.
2. Double-click Local Area Connection.



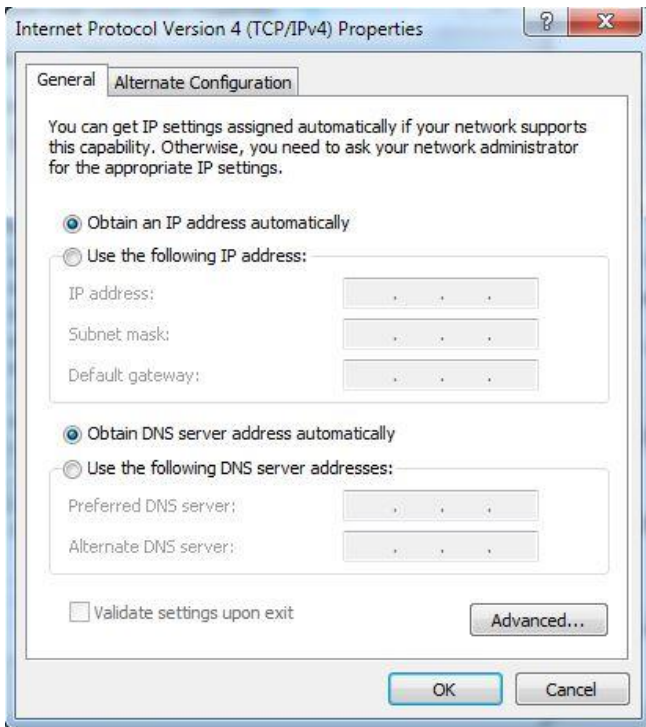
3. In the Local Area Connection Status window, click Properties.



4. Select Internet Protocol (TCP/IPv4) and click Properties.



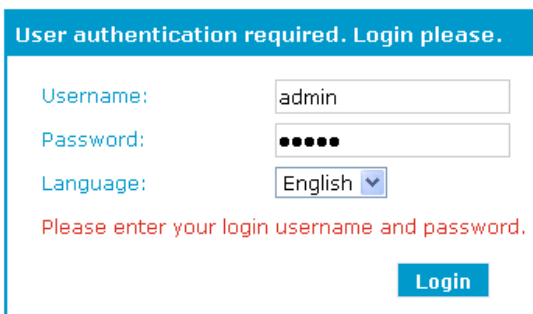
5. Select the Obtain an IP address automatically and Obtain DNS server address automatically radio buttons.



6. Click OK to finish the configuration.

3.2 Connect Router with Internet

1. Open IE browser, input the default IP address http://192.168.0.1 -> Username: admin; Password: admin -> Click “login”.

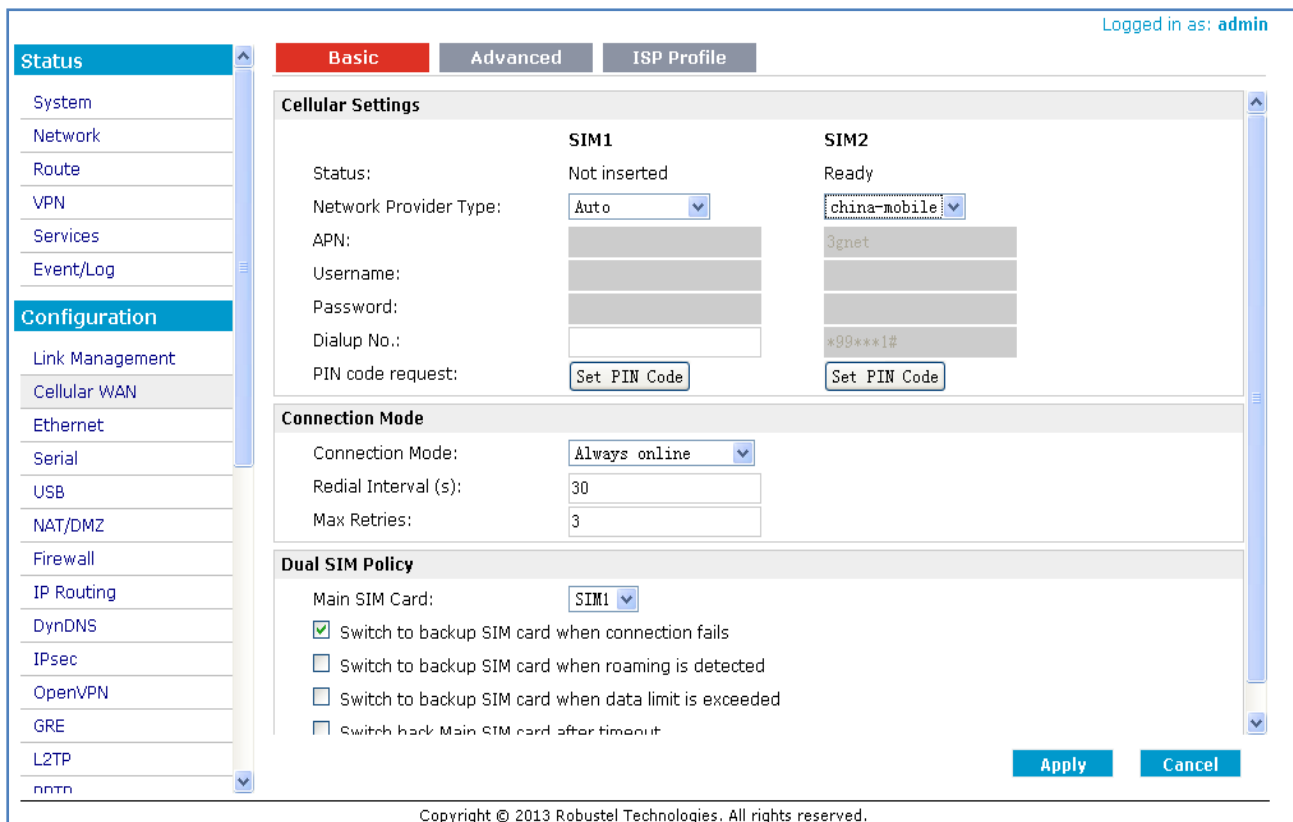


Note: Before configuring your router, you need to know the following default settings.

Item	Description
Username	admin
Password	admin
Ethernet	192.168.0.1/255.255.255.0, LAN mode
DHCP Server	Enabled.

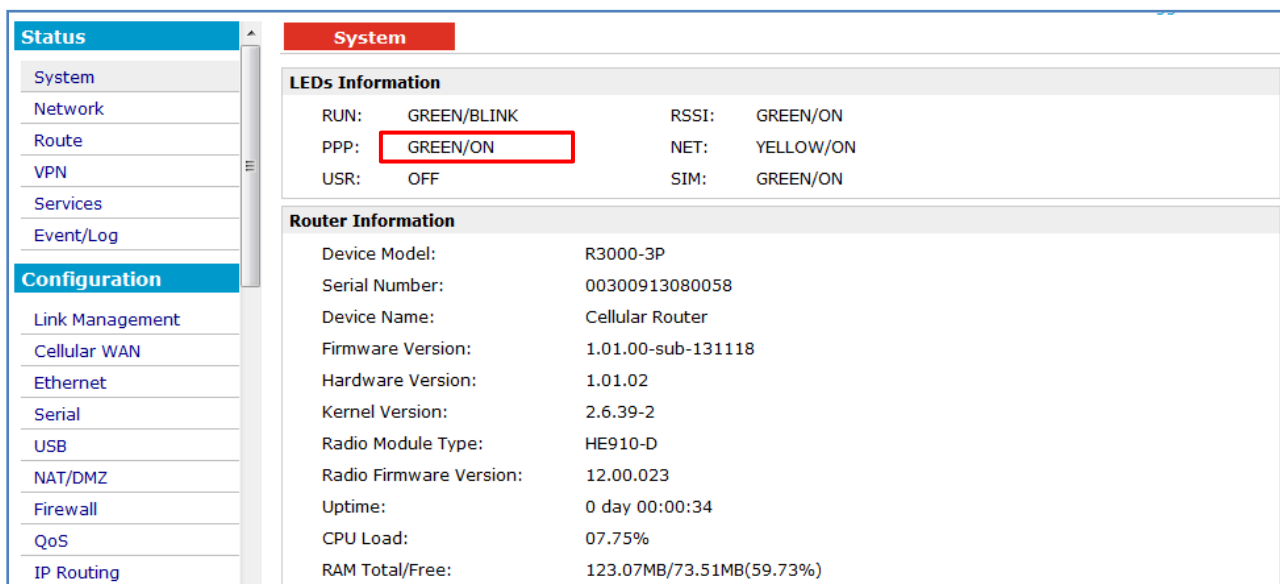
2. After succeed to login, go to tab “Cellular WAN” --> enter relevant correct ISP settings, such as **APN, Username,**

Password, Dialup No. (you can check these information from local ISP) --> click “Apply” -> click “Save” and “Reboot”.



Note: After configure R3000 Lite with new settings, you need to click “Apply” -> “Save” -> “Reboot”.

- After above correct configuration, R3000 Lite should succeed to establish PPP connection. You can go to tab “Configuration” -> “Status” -> “System” to check whether “PPP” indicator is “ON” (ON means PPP connection established).



- R3000 Lite can connect to Internet now.