



High-Tech Distribution

Revision 1.0, May 2018

Product Type

H-POL or V-POL Yagi Antenna with Radome 698-960/1710-2170/2300-2700 MHz

Part Number Options

GL627-11-10M-LMR200-SMA

GL627-11-5M-LMR200-SMA

Description: 10Metre or 5Metre LMR200 cable with SMA Male

Specification

Electrical Data

Frequency (MHz):	698-960	1710-2170	2300-2700
Gain:	10 dBi	10.5 dBi	11 dBi
VSWR:	<1.7:1	<1.5:1	
Polarization:	Horizontal Or Vertical		
Horizontal Beamwidth :	58°(±8°)	55°(±8°)	51°(±8°)
Vertical Beamwidth:	47°(±6°)	46°(±6°)	42°(±6°)
Nominal Impedance:	50 Ohms		
F/B Ratio:	>25 dB		
Max Input Power:	100 W		
Lightning Protection:	DC Ground		

Mechanical Data

Connector :	N Female
Dimension:	442*210*64mm
(length*width*height)	17.4*8.3*2.5 in
Weight:	1kg/2.2lb
Cable Length:	300mm/11.81in
Radome Material:	Weatherproof ABS
Mounting Method:	Mast
Mast Size:	Ø40-Ø50mm
Rated Wind Velocity:	210km/h
Operating temperature:	-40~+65°C

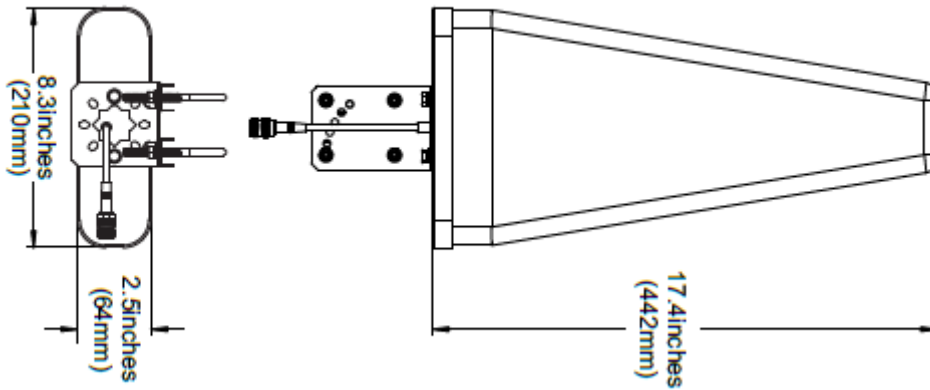


NEW ZEALAND OFFICE

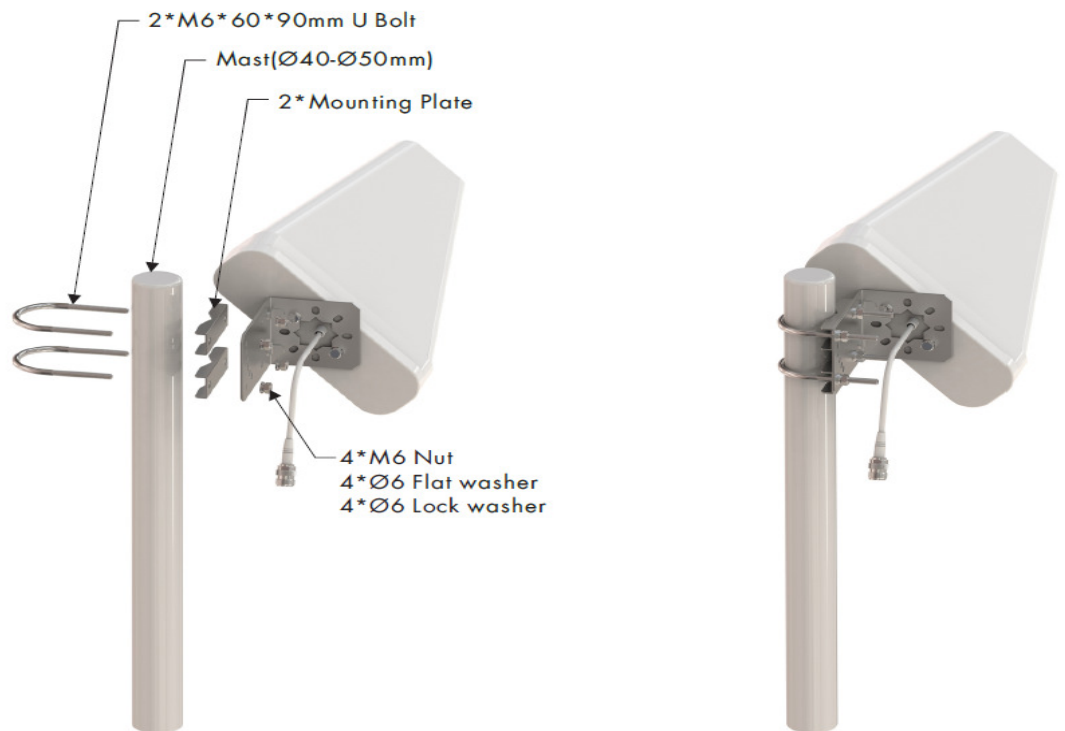
Unit 3, 59 Paul Matthews Road
Rosedale, Auckland 0632
New Zealand
Phone: +64 9 415 9150
Fax: +64 9 415 9360
www.glyn.co.nz

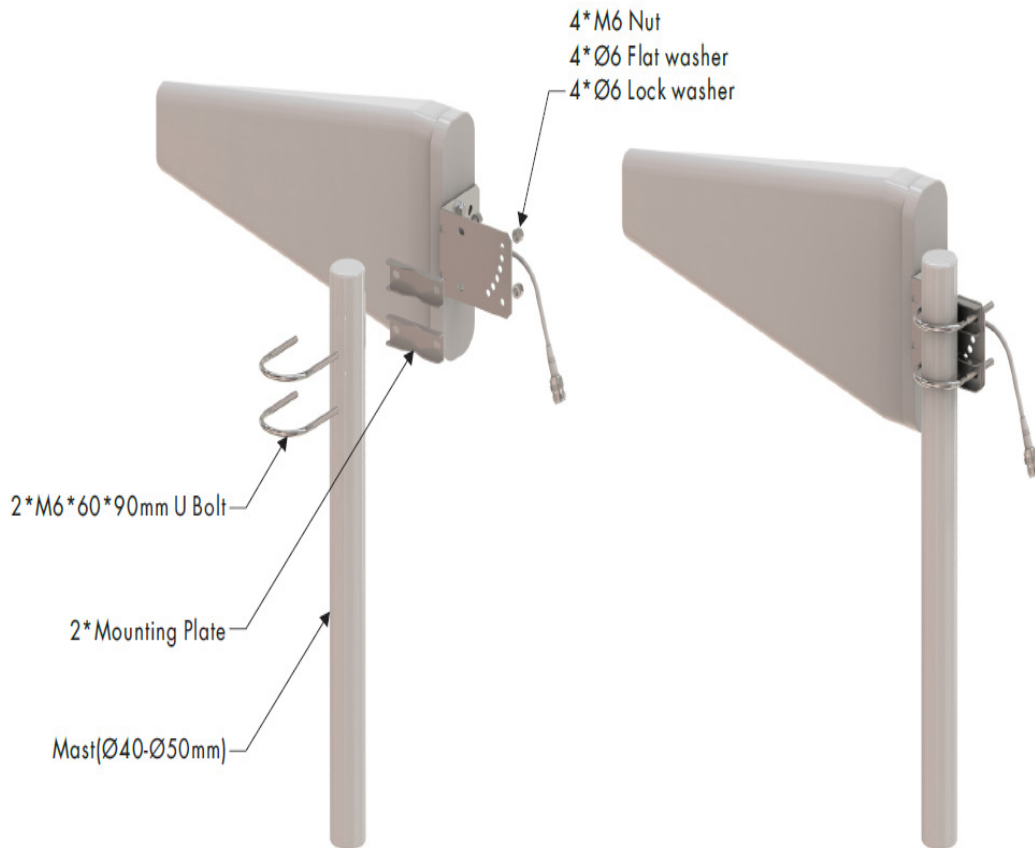
AUSTRALIAN OFFICE

33, 10 Gladstone Road
Castle Hill, NSW
Sydney, Australia
Phone: +61 2 9889 2520
Fax: +61 2 9889 2954
www.glyn.com.au



Installation Instructions





NEW ZEALAND OFFICE

Unit 3, 59 Paul Matthews Road
Rosedale, Auckland 0632
New Zealand
Phone: +64 9 415 9150
Fax: +64 9 415 9360
www.glyn.co.nz

AUSTRALIAN OFFICE

33, 10 Gladstone Road
Castle Hill, NSW
Sydney, Australia
Phone: +61 2 9889 2520
Fax: +61 2 9889 2954
www.glyn.com.au